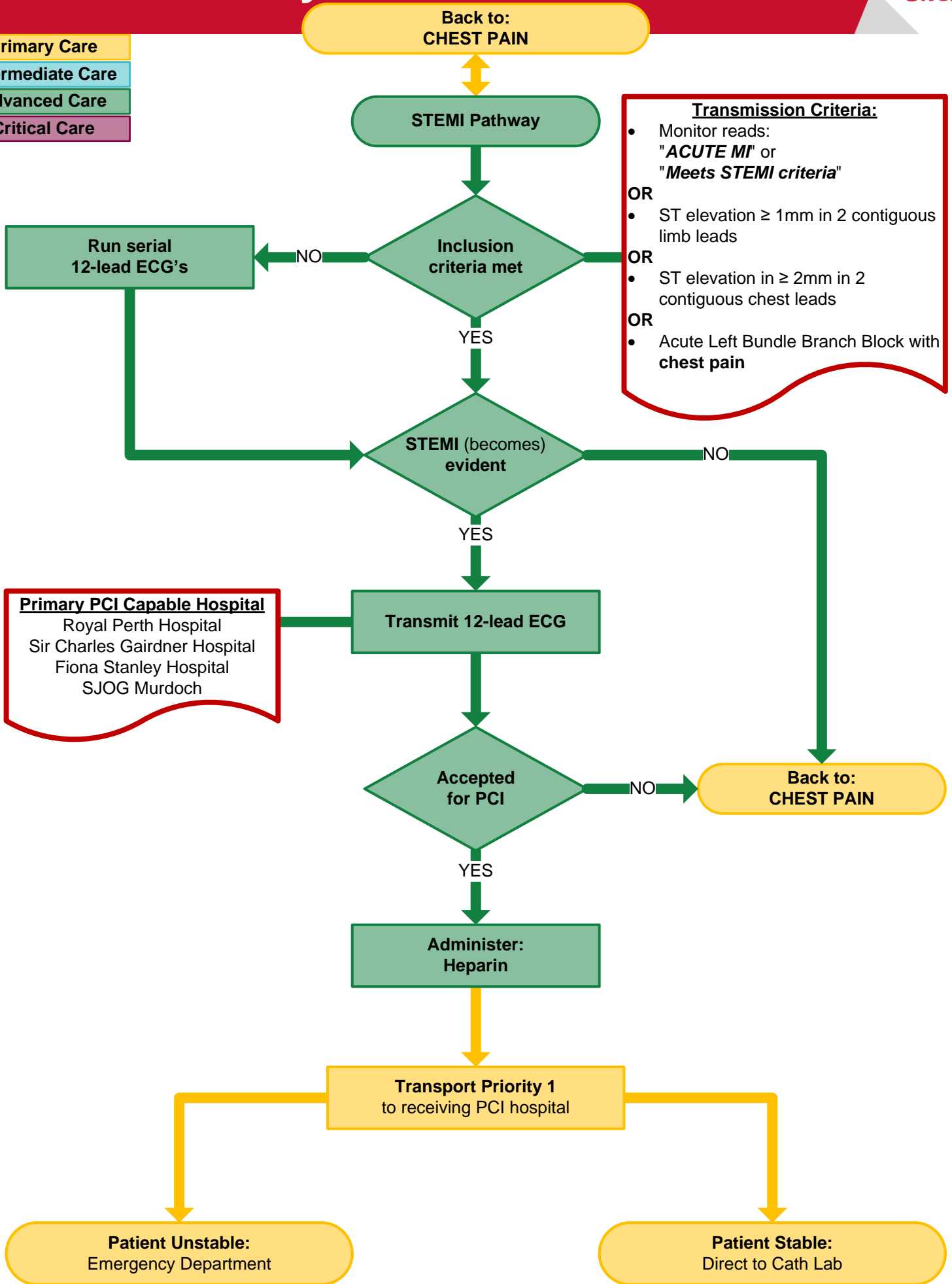


# STEMI Pathway

Primary Care
Intermediate Care
Advanced Care
Critical Care



**Transmission Criteria:**

- Monitor reads: **"ACUTE MI"** or **"Meets STEMI criteria"**

OR

- ST elevation  $\geq 1$ mm in 2 contiguous limb leads

OR

- ST elevation in  $\geq 2$ mm in 2 contiguous chest leads

OR

- Acute Left Bundle Branch Block with chest pain

**Primary PCI Capable Hospital**

- Royal Perth Hospital
- Sir Charles Gairdner Hospital
- Fiona Stanley Hospital
- SJOG Murdoch