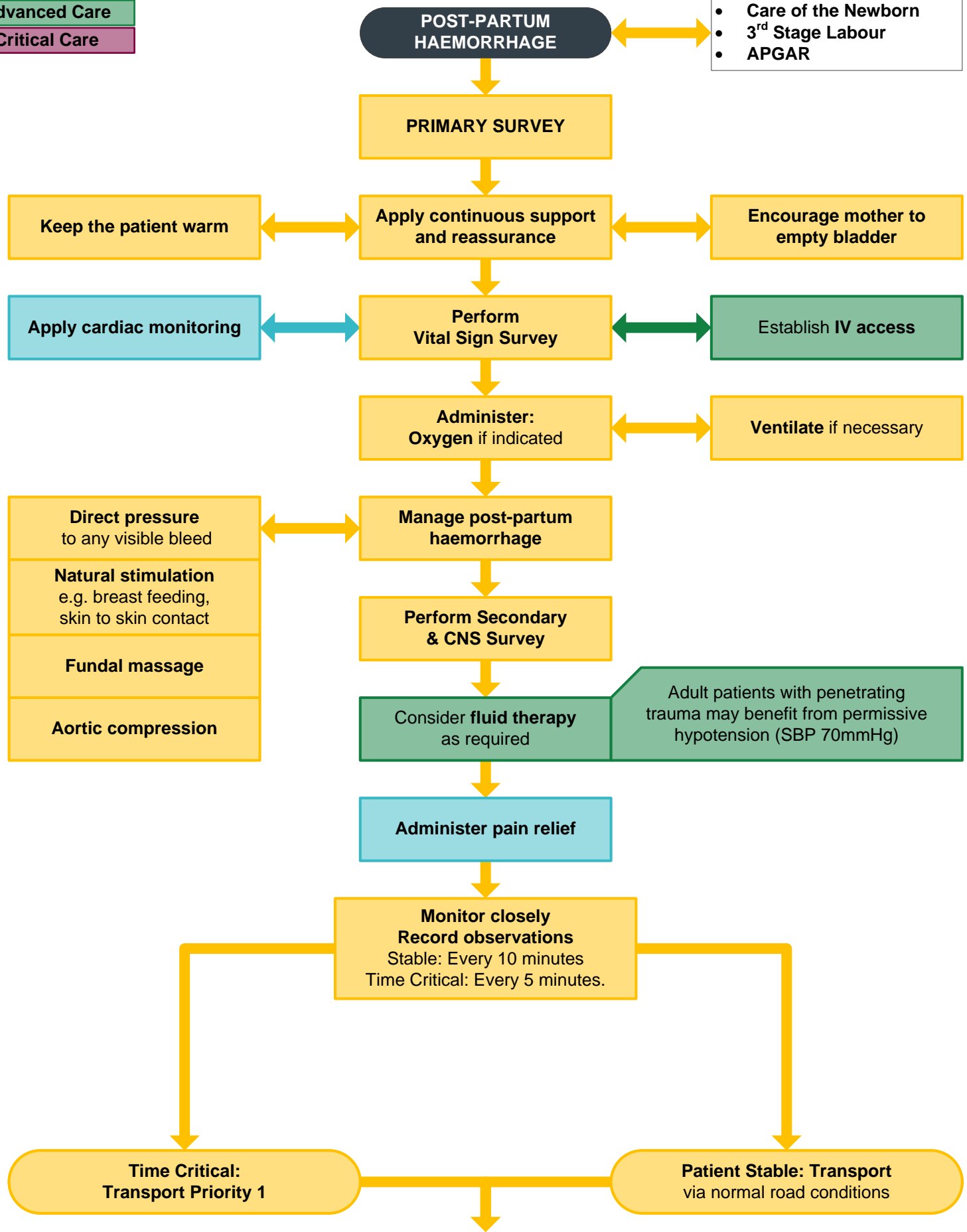


Post-partum Haemorrhage

| |
|-------------------|
| Primary Care |
| Intermediate Care |
| Advanced Care |
| Critical Care |

| |
|--------------------------------|
| Newborn Life Support |
| • Care of the Newborn |
| • 3 rd Stage Labour |
| • APGAR |



In all circumstances: PRE-NOTIFY RECEIVING FACILITY