

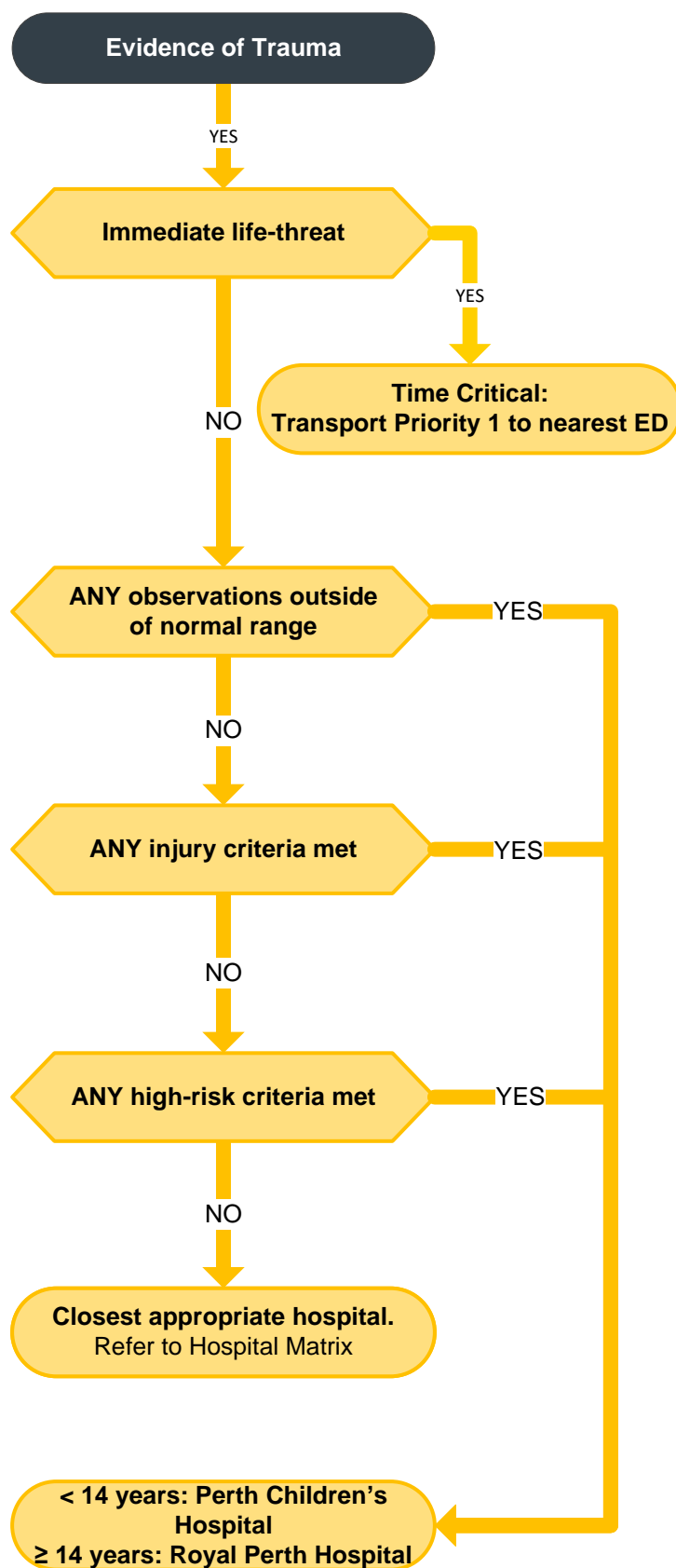
# Major Trauma Bypass – Adult (14 – 65 years)

This guideline is intended as a guide and should not replace sound clinical judgement

	Observations 14yo - 65yo
HR	< 50 or > 120
RR	< 10 or > 29
SysBP	< 90mmHg
SpO2 (RA)	< 94%
GCS	< Baseline

Injury Criteria
<ul style="list-style-type: none"> <li>Suspicion of multiple rib #'s, severe pain, restraint abrasion/contusion, evidence of blunt impact</li> <li>Significant injuries involving more than one body region</li> <li>Two or more proximal long bone fractures</li> <li>Amputation / crush Injury proximal to hand and foot</li> <li>Crushed, de-gloved or mangled limb or extreme open fracture</li> <li>Suspected spinal fracture and/or spinal cord injury</li> <li>Suspected open and/or depressed skull fracture</li> <li>Suspected fractured pelvis (excluding isolated # NOF)</li> <li>Penetrating Injuries to the head, neck, chest, abdomen, pelvis, axilla, or groin</li> </ul>

High-Risk Criteria
<ul style="list-style-type: none"> <li>Fatality on scene whereby the patient was in the same vehicle</li> <li>MBA &gt; 30 km/h <b>with injuries</b></li> <li>MVA &gt; 60 km/h <b>with injuries</b></li> <li>Partial or complete ejection</li> <li>Fall &gt; 3 meters</li> <li>Pedestrian or cyclist with speed impact &gt; 25km/h</li> <li>Patient entrapment with compression</li> <li>Cabin intrusion</li> <li>&gt;30 cm occupants side</li> <li>&gt;45 cm any side</li> <li>Explosion</li> </ul>



This tool is to be used when you are within 45 minutes of PCH/ RPH driving under normal conditions.

Burns associated with major trauma should still be transferred to PCH / RPH

Pregnant patients presenting with major trauma should be transferred to PCH / RPH

**≥14 years old go to RPH**

**<14 years old go to PCH**