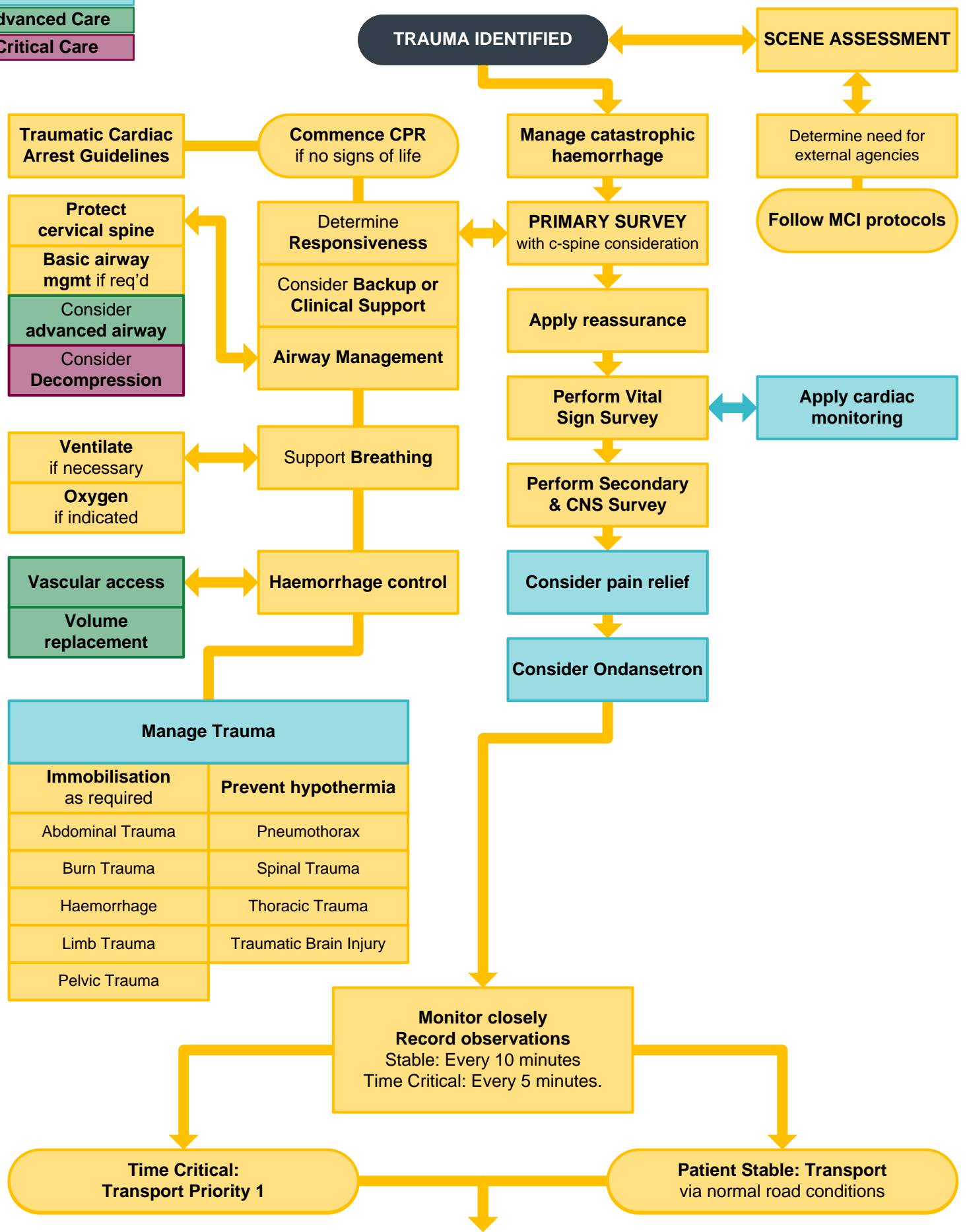


Trauma Management Principles

Primary Care
Intermediate Care
Advanced Care
Critical Care



Traumatic Cardiac Arrest Guidelines

Protect cervical spine
Basic airway mgmt if req'd
 Consider **advanced airway**
 Consider **Decompression**

Ventilate if necessary
Oxygen if indicated

Vascular access
Volume replacement

Manage Trauma	
Immobilisation as required	Prevent hypothermia
Abdominal Trauma	Pneumothorax
Burn Trauma	Spinal Trauma
Haemorrhage	Thoracic Trauma
Limb Trauma	Traumatic Brain Injury
Pelvic Trauma	

Monitor closely
Record observations
 Stable: Every 10 minutes
 Time Critical: Every 5 minutes.

Time Critical: Transport Priority 1

Patient Stable: Transport via normal road conditions

Transport to appropriate facility as per **Major Trauma Guidelines**